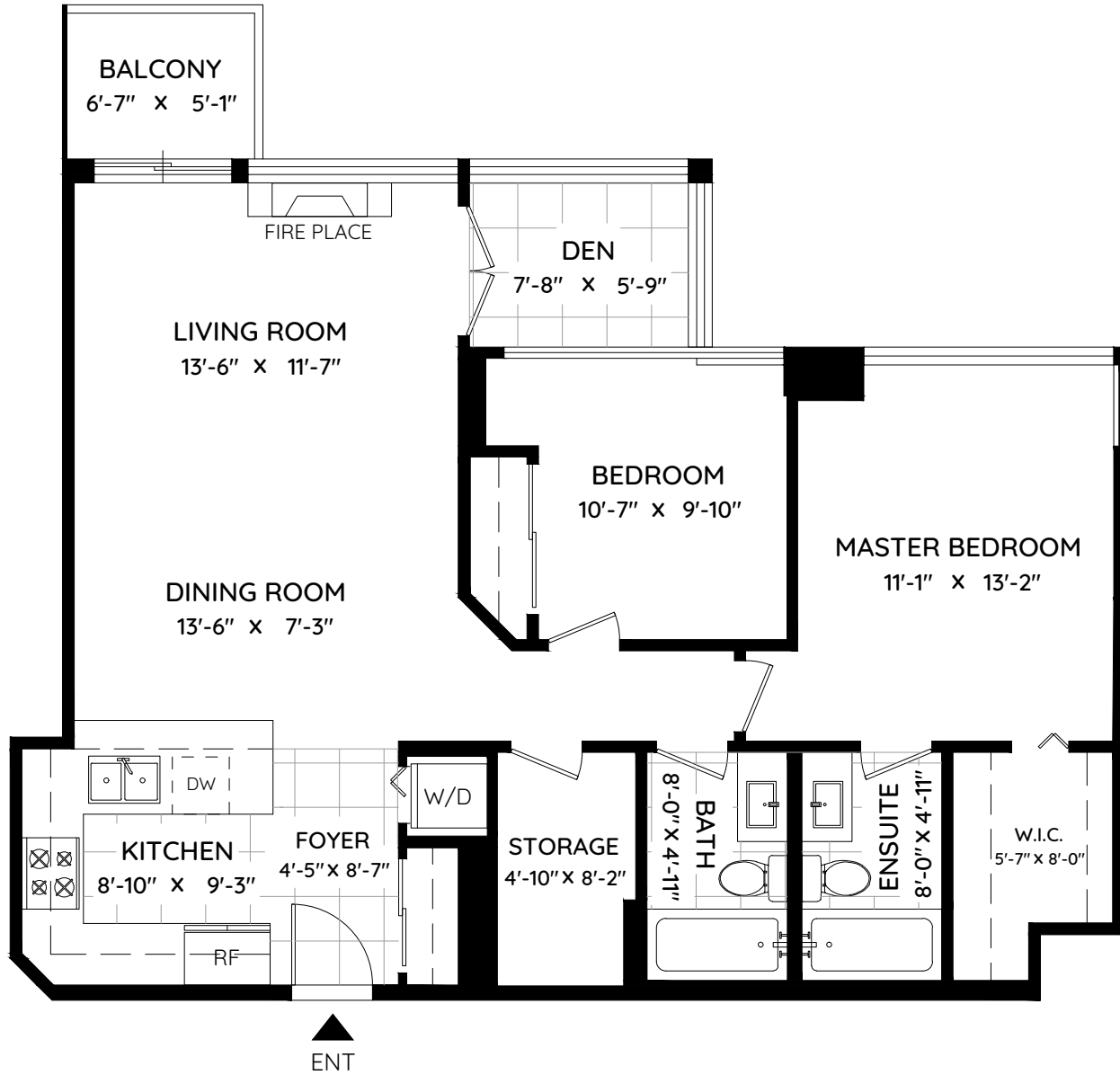


1806 - 1328 W PENDER ST VANCOUVER, BC

LIVING AREA 1,008 SQ.FT.

BALCONY 37 SQ.FT.

CEILING HEIGHT 8'-0"



The floor plan and the measurements are approximate and are to be used for advertising usage only. Not suitable for architectural or construction. E&O Insured



Booked on the Pixilink App™

