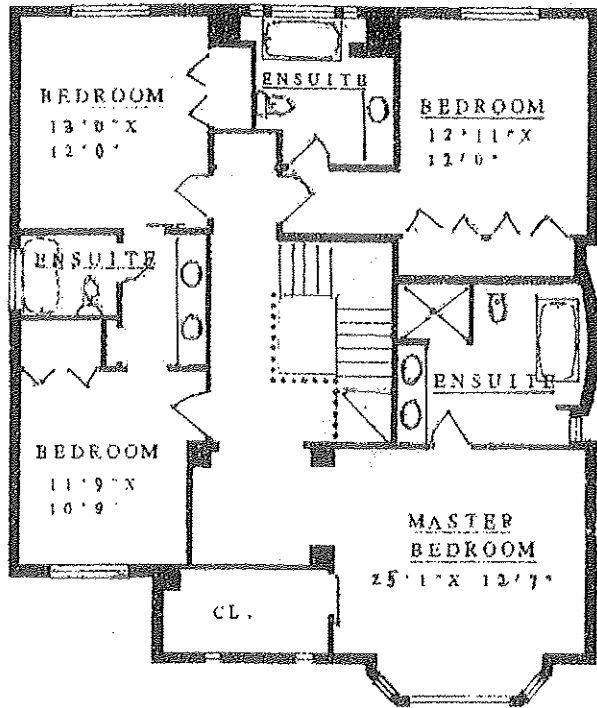
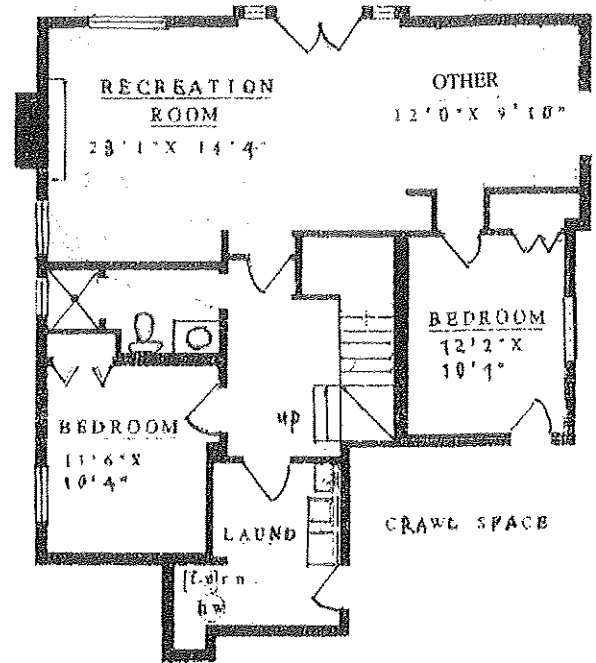


4005 West 13th Avenue  
Vancouver, BC

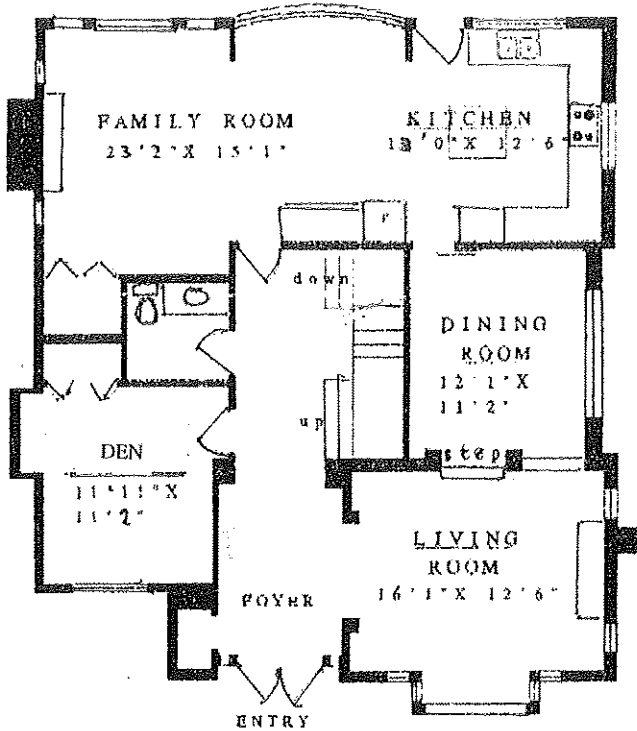
LOWER LEVEL	1112 SQ. FT.
MAIN LEVEL	1488 SQ. FT.
UPPER LEVEL	1431 SQ. FT.
TOTAL AREA	4031 SQ. FT.
GARAGE	715 SQ. FT.



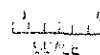
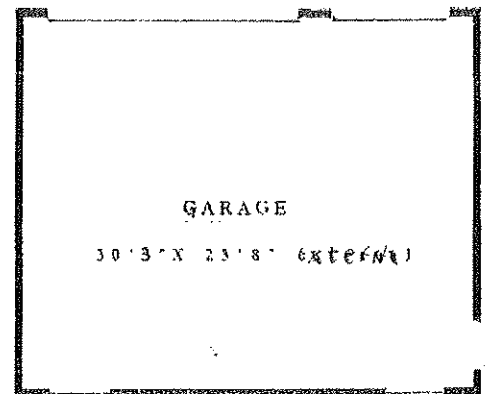
U P P E R L E V E L



L O W E R L E V E L



M A I N L E V E L



**MM** MEASURE MASTERS  
VANCOUVER  
921 6817  
11 JANUARY 1988  
4005213